

# Textiles





# DESIGN MATTERS .

---

Our team of engineers and designers collaborate with the mission of developing customized solutions on a small and large scale that meet high standards of quality, aesthetics and sustainability, because at Versa Concepto we believe that good design does matter.

We design  
**thinking of you**

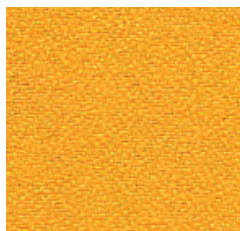


# TEXTILES

Our line of textiles has a wide collection of fabrics, which are designed to add a touch of elegance and sophistication to any indoor and outdoor space. We offer a variety of colors, patterns and textures to adapt to any design style, from classic to contemporary.

MEMPHIS · INFINITY · ALTACIA · LUX · SALENTO · SPECTRA

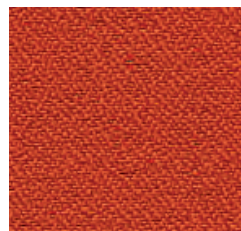
# MEMPHIS



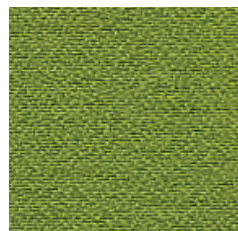
Perseus



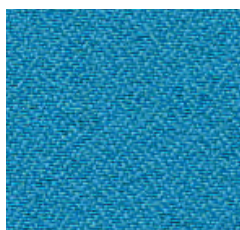
Ara



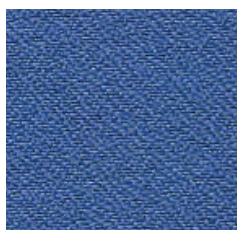
Aries



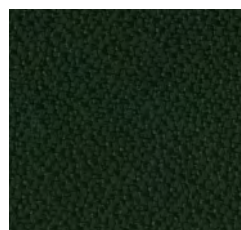
Serpens



Ursa



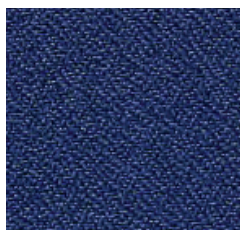
Delphinus



Hidra



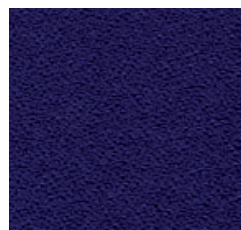
Cetus



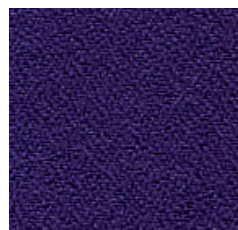
Aquarius



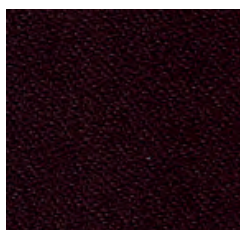
Orión



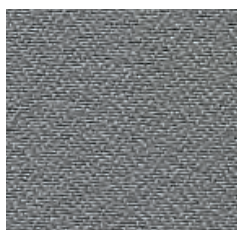
Corvus



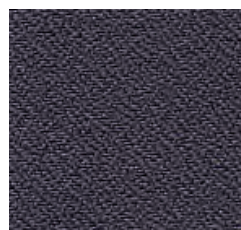
Borealis



Casiopea



Atria



Lira



Niger

## COMPOSITION

Top Layer: Polyester

Back Layer: Acrylic Resin

## SPECIFICATION

Abrasion cycles: 25,000 cycles

## FINISH



·Anti-stain



·Flame  
retardant



·Water  
resistant



·Washable

## PHYSICAL CHARACTERISTICS



Resistance to:

- Wear
- Cracking
- Abrasion

## APLICACIONES



- Corporate
- Home Office
- Office



- School

## USE



Interior



Chairs,  
Vertex Sofas  
and Decco

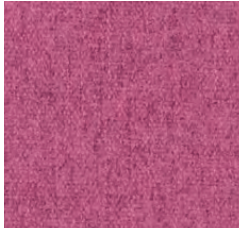
\*Does not apply for Slice



Privacy  
Panel

\*The recommendations and suggestions in this technical sheet are based on experiences and tests obtained in our laboratories. We suggest doing the necessary tests to obtain the results suitable for the client's working conditions. There may be slight differences between the images and the Physical sample in Niger for each game.

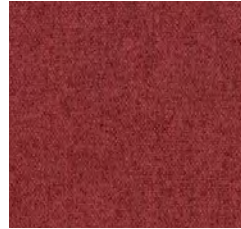
# INFINITY



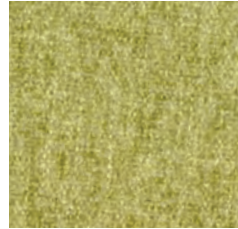
Grosella



Almendra



Granada



Kiwi



Maracuyá



Mora azul



Acai



Centeno



Chía



Escarcha

## COMPOSITION

Top Layer: Polyester  
Back Layer: Polyester

## SPECIFICATION

Abrasion cycles: 55,000 cycles

## FINISH



·Anti-stain  
·Anti-mold



·Flame  
Retardant



·Water  
resistant



·Washable

## PHYSICAL CHARACTERISTICS



Resistant to:  
·Wear  
·Cracking  
·Fabric Pilling

## APLICACIONES



·Contract



·Corporate  
·Home Office  
·Office



·Residential



·Hospitality

## USE



Interior



Chair  
Soft Seating



Privacy  
Panel

\*The recommendations and suggestions in this technical sheet are based on experiences and tests obtained in our laboratories. We suggest doing the necessary tests to obtain the appropriate results in client's working conditions. There may be slight differences between the images and the physical sample of each item.

# ALTACIA



Muscarì



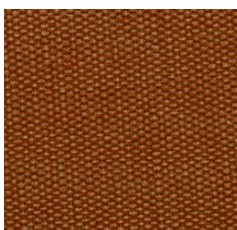
Rosa



Echeverría



Radice



Ixora



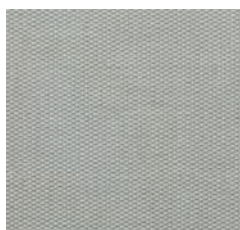
Gazania



Grafito



Gris



Alcatraz

## COMPOSITION

Top Layer: PVC

Back Layer: Polyester

## SPECIFICATION

Abrasion cycles: 50,000 cycles

## FINISH



·Anti-stain  
·Anti-mold  
·Antibacterial



·Flame  
retardant



·Washable



·Pet friendly

## PHYSICAL CHARACTERISTICS



Resistant to:

·Wear  
·Cracking

## APLICACIONES



·Contract



·Corporate  
·Home Office  
·Office



·Residential



·School



·Hospitality

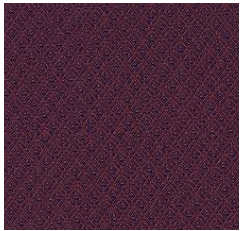
## USE



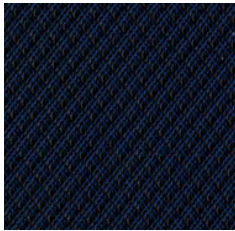
Interior

\*The recommendations and suggestions in this technical sheet are based on experiences and tests obtained in our laboratories. We suggest doing the necessary tests to obtain the appropriate results in client's working conditions. There may be slight differences between the images and the physical sample of each item.

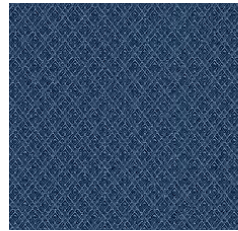
# LUX



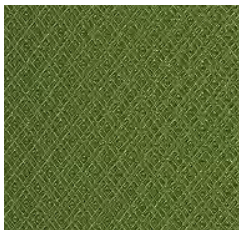
Zafiro



Índigo



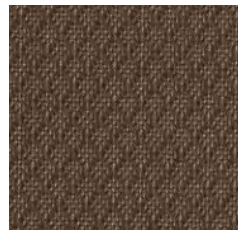
Diamante



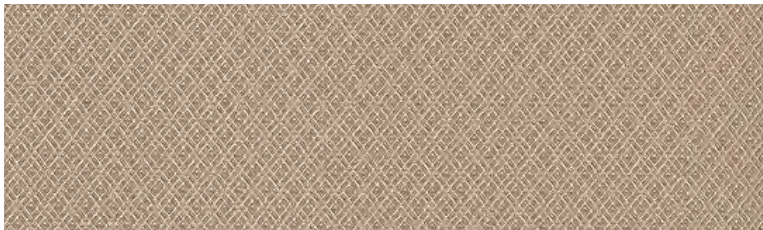
Esmeralda



Basalto



Granito



Ágata

## COMPOSITION

Top Layer: PVC

Back Layer: Polyester

## SPECIFICATION

Abrasion cycles: 75,000 cycles

## FINISH



·Anti-stain  
·Anti-mold  
·Antibacterial



·Flame  
retardant



·Water  
resistant



·Washable



·Antistatic

## PHYSICAL CHARACTERISTICS



Resistant to:  
·Wear  
·UV Rays

## APLICACIONES



·Contract



·Corporate  
·Home Office  
·Office



·Residential



·School



·Hospitality

## USE



Interior



Exterior



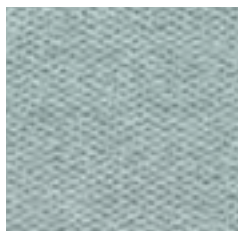
# SALENTO



Gris



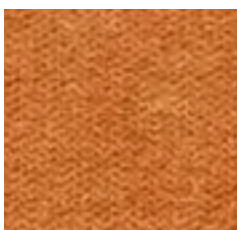
Azul clásico



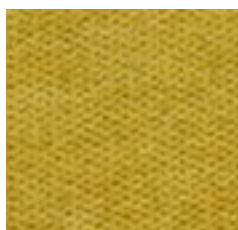
Ártico



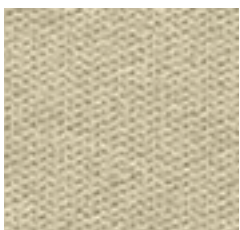
Zafiro



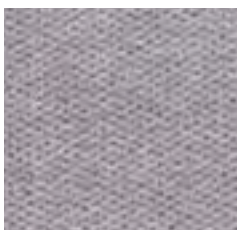
Mandarina



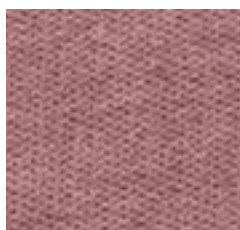
Mango



Tierra



Lila



Malva

## COMPOSITION

Top Layer: Polyester

## SPECIFICATION

Only applies to seating

## FINISH



·Anti-mold  
·Antibacterial



·Washable

## PHYSICAL CHARACTERISTICS



Resistant to:

·Wear  
·Cracking  
·Fabric Pilling

## APLICACIONES



·Corporate  
·Home Office  
·Office



·Residential

## USE



Interior



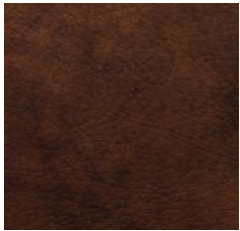
Chair



Privacy  
Panel

\*The recommendations and suggestions in this technical sheet are based on experiences and tests obtained in our laboratories. We suggest doing the necessary tests to obtain the appropriate results in client's working conditions. There may be slight differences between the images and the physical sample of each item.

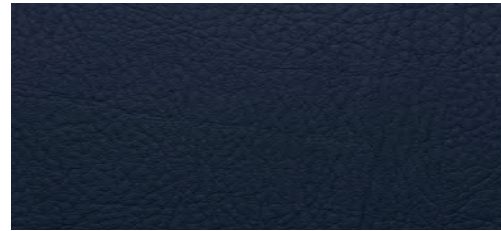
# SPECTRA



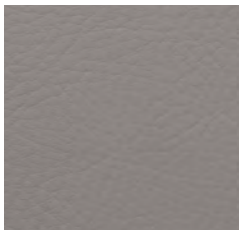
Penumbra



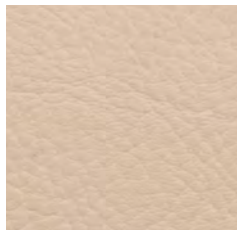
Sombra



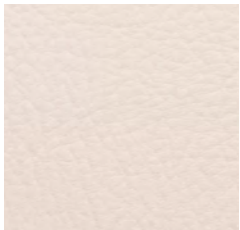
Bruma



Humo



Niebla



Luz

## COMPOSITION

Top Layer: PVC  
Back Layer: Polyester

## SPECIFICATION

Abrasion cycles: 75,000

## FINISH



·Antifungal  
·Anti-mold  
·Antibacterial



·Flame  
retardant



·Washable



·Antistatic

## PHYSICAL CHARACTERISTICS



Resistant to:  
·Abrasion  
·Low temperatures

## APLICACIONES



·Contract



·Corporate  
·Office



·Residential

## USE



Interior



Chair  
Soft Seating



## Versa Concepto, Design Matters.

At Versa Concepto we understand that each project is unique and that is why we offer personalized and flexible design solutions that adapt perfectly to your specific requirements. We work with a wide range of commercial spaces, including offices, hotels and schools.

SEARCH OUR NETWORK OF DISTRIBUTORS

[www.versaconcepto.com](http://www.versaconcepto.com)

VALID AUGUST -DECEMBER 2023



CERTIFIED ORGANIZATION



9001-2015  
2013CRE-188

